



Pressure Transmitters

Hammer Union Pressure Transmitter

This is a 4-20mA output Hammer-Lug Union pressure transmitter. It is ATEX certified for use in Hazardous areas. IP68 rated and is EMC compliant to CE standards. It is available in the 1502 and 2202 union. The option of secondary containment for users that may experience high velocity pressure spikes is available upon request please contact us if you require this additional feature.



Key Features

- Ranges to 15,000psi (1000 bar)
- 0.25% accuracy
- 4-20mA two wire output
- IS - ATEX certified
- Full RFI/EMC immunity compliance
- Sour service standard - Materials comply with NACE MR-DI-75 Revision 03
- Fused ceramic technology
- Shock and vibration tested

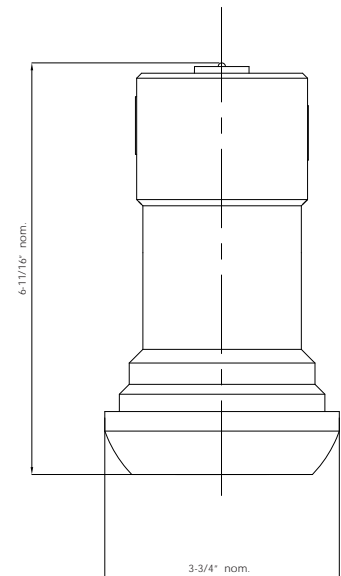
Applications

- Drilling instrumentation
- Mud logging systems
- MWD surface sensing
- Wellhead monitoring
- BOP control systems
- Subsea control systems
- Production testing
- Process systems
- Well Cementing

Input Specifications	
Pressure Range	0 - 15,000psi (1000bar)
Over Pressure	x1.5 of calibration pressure
Burst Pressure	x2.5 for 15,000 psi (1000 bar) range, > x3 on all other ranges
Reverse Polarity Protection	Yes
Electrical Excitation	12 to 28Vdc
Pressure Media	Fluids compatible with Duplex Stainless Steel UNS 32205/ UNS31803 (SAF2205) to EN 1.4462, Ceramic (AL2O3), Inconel X750 and Perfluoroelastomer

Output Specifications (@ Ambient Temperature)	
Span	16 mA
Residual Unbalance	4mA
Zero Setting Error	± 1%/Span
Span Set	±1%
Lead Driving	800 ohm @ 28Vdc supply
Long Term Stability	±0.1%/Span
Non-linearity	See NLH
Hysteresis	See NLH
Repeatability	See NLH
Combined NLH (+repeat)	<±0.25%/Span BFSL

Dimensional Specifications



Manufactured for NASC by RM&C



Pressure Transmitters

Hammer Union Pressure Transmitter

Environmental Performance	
Operating Temperature	-22°F to +194°F
Compensated Temperature	14°F to +194 °F
Storage Temperature	-22°F to 212°F
Process Temperature	194°F max
Thermal Zero Shift (TZS)	±0.01%/Span/°F typical
Thermal Span Shift (TSS)	±0.01%/°F typical
IP Rating	68



Physical Characteristics	
Pressure Port	1502 Male sub hammer Lug Union Units are directly compatible with WECO® 2"-1502 and 2202
Materials of Construction	Duplex Stainless Steel UNS 32205/UNS31803 (SAF2205) to EN 1.4462
Method of Installation	Hammer Lug Union
Electrical Connection	500Vac
Electrical Connection	6-Pin connector to MIL-C-24682 (10-6 POL)



Physical Characteristics	
Pressure Port	1502 Male sub hammer Lug Union Units are directly compatible with WECO® 2"-1502 and 2202
Materials of Construction	Duplex Stainless Steel UNS 32205/UNS31803 (SAF2205) to EN 1.4462
Method of Installation	Hammer Lug Union
Electrical Connection	500Vac
Electrical Connection	6-Pin connector to MIL-C-24682 (10-6 POL)

Approvals	
Intrinsic Safety	EEx ia IIC T4 (max temperature = 194°F)
EMC	Compliant to latest EMC standards.

Model Code Logic

W / 9 / 420 / 8 / X / X / XXXXP

Position	Code	Description
1: Pressure Ref. (Sealed Gauge)	W	Hammer Union Pressure Transmitter
2: Series	9	Basic submersible sensor with drain wire adaptor
3: Output	420	4-20mA
4: Pressure Port	8	2" Hammer Union Male-Sub
5: Secondary Pressure Containment	0	None
6: Electrical Connector	0	MIL C 24682
7: Pressure Range (psi)	350P	0-5,000 PSI
	400P	0-6,000 PSI
	700P	0-10,000 PSI
	1000P	0-15,000 PSI



0043

Manufactured for NASC by RM&C