



Bottle Switches (External Mount Level Switches)

NASC's line of brass bottle switches are designed to be installed externally to ship tanks and industrial tanks. It may also be bolted to an adjoining structure. Custom configurations are available upon request. Specifications regarding this model may change without notice.



BTL100/25BBS
BTL 100/25BBN

Standard Features:

- All Brass Bottle
- Brass Pipe Plug and Stem
- 316SS Float or Buna Float
- External Mounting Tab
- 18AWG PVC Jacketed 4C Wire
- Hermetically Sealed SPDT Reed Switch
- Made in the USA



Wiring Logic
Switch Rated SPDT 25VA
Red - N.O.
Black - N.C.
White - Common
Green - Ground



BTL 150/25BBS
BTL 150/25BBN

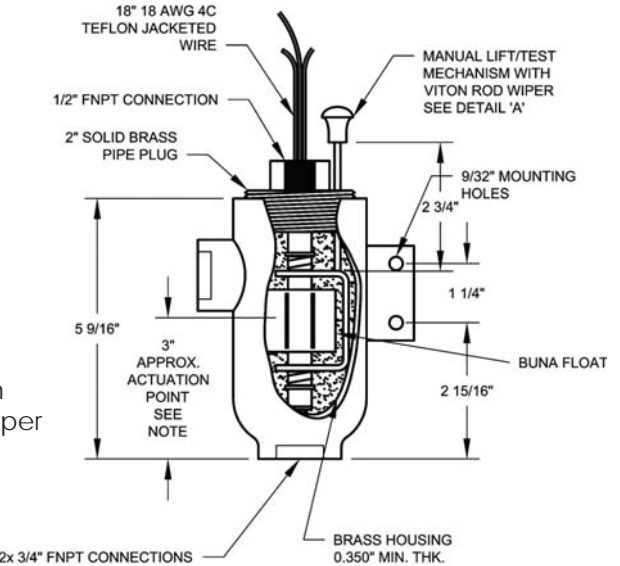
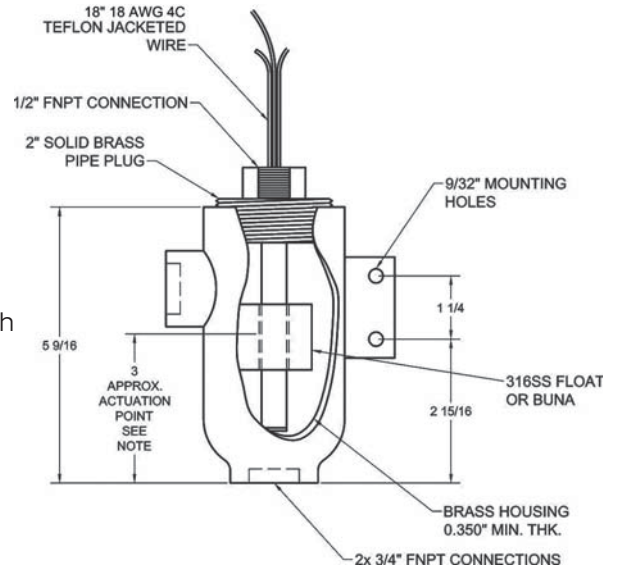
Standard Features:

- All Brass Bottle
- Brass Pipe Plug and Stem
- 316SS Float or Buna Float
- External Mounting Tab
- 18AWG PVC Jacketed 4C Wire
- Hermetically Sealed SPDT Reed Switch
- 316SS Lift/Test Mechanism and Rod Wiper
- ABS Type Approved

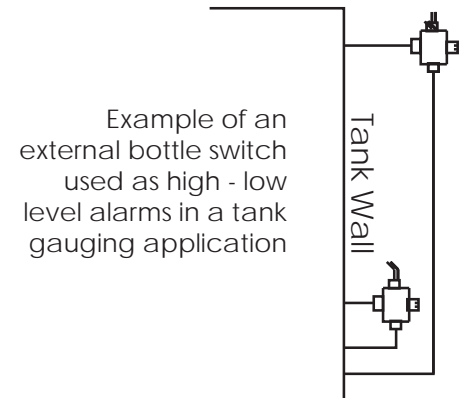


BTL100/25BBS or BTL100/BBN can be supplied with a 100VA from 'C' hermetically sealed reed switch.

Note:
The actuation point will vary depending on the temperature and the specific gravity of the individual liquid be detected.



Max Temp	175F
Max PSIG	50
316SS Float SG	0.64
Buna Float SG	0.48
Watt Rating*	25 AC/DC





Bottle Switches (External Mount Level Switches)

NASC's line of stainless steel bottle switches are designed to be installed externally to ship tanks and industrial tanks. It may also be bolted to an adjoining structure. Custom configurations are available upon request. Specifications regarding this model may change without notice.

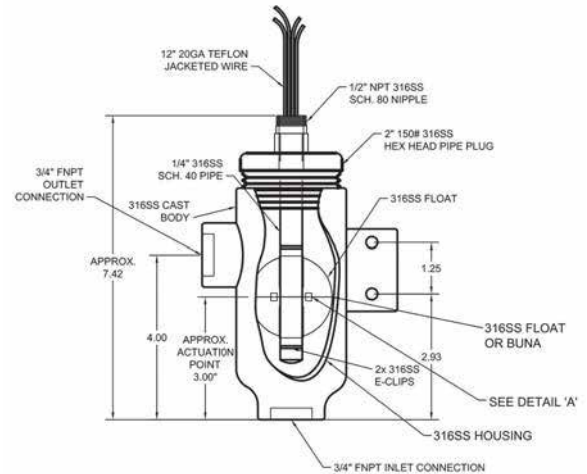
BTL 400/25SSS



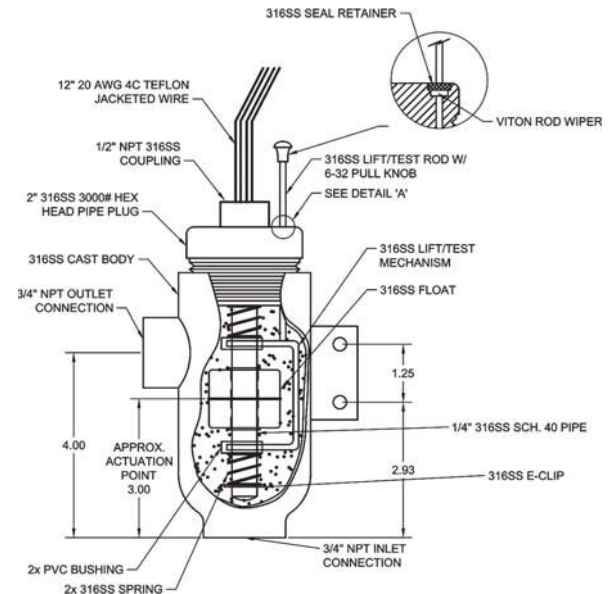
Max Temp	175F
Max PSIG	50
316SS Float SG	0.60 - 0.69
Watt Rating*	25 AC/DC

Standard Features:

- All 316 Stainless Steel
 - Body
 - Stem & Connections
 - 316SS Float or Buna Float
 - External Mounting Tab
- Interchangeable Parts for Easy Maintenance
- 20 AWG PVC Jacketed 4C Wire
- Hermetically Sealed SPDT Reed Switch
- Made in the USA



BTL 450/25SSS
BTL 450/25SSN

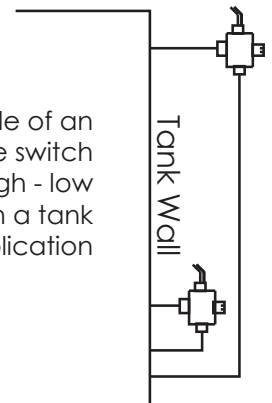


BTL400/450 is available with a 100VA from 'C' hermetically sealed reed switch.

Note:
The actuation point will vary depending on the temperature and the specific gravity of the individual liquid be detected.

Max Temp	175F
Max PSIG	50
316SS Float SG	0.64
Buna Float SG	0.48
Watt Rating*	25 AC/DC

Example of an external bottle switch used as high - low level alarms in a tank gauging application





Bottle Switches (External Mount Level Switches)

Nasc's line of stainless steel bottle switches are designed to be installed external to marine and industrial tanks to provide a level alarm. It may also be bolted to an adjoining structure for remote mounting. Custom configurations are available upon request. Specifications regarding this model may change without notice.

BTL 500/10SSN



Standard Features:

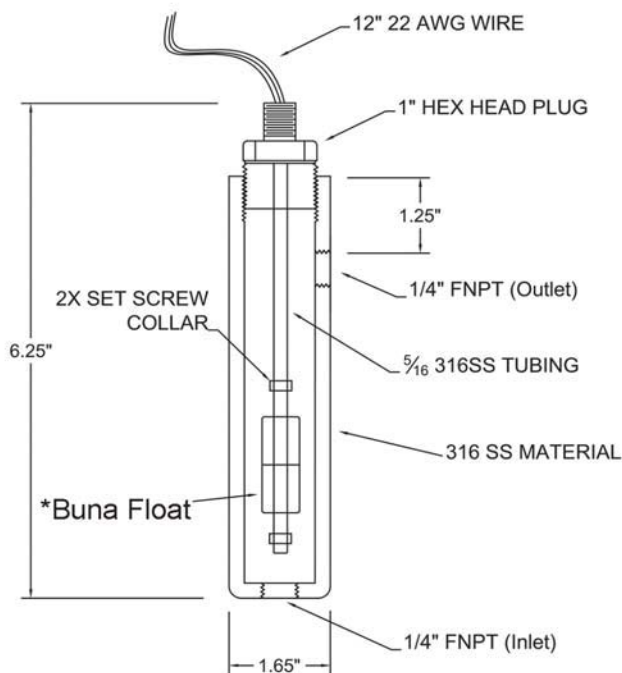
- 316 Stainless Steel Body
- 316 Stainless Steel Stem & Connections
- Buna Float
- Interchangeable Parts for Easy Maintenance
- 3 # 22 AWG PVC Jacketed Wire
- Hermetically Sealed SPST Reed Switch
- Made in the USA



Wiring Logic
Switch Rated SPST 10VA
Black - N.C. **
White - Common
Green - Ground



Example of a low and high level alarm on a level gauge.



**N.O. available upon request

Max Temp	175F
Max PSIG	50
*Buna Float SG	0.45
Watt Rating*	25 AC/DC

*Stainless steel float available. BTL500/SSS

Note:

The actuation point will vary depending on the temperature and the specific gravity of the individual liquid be detected.